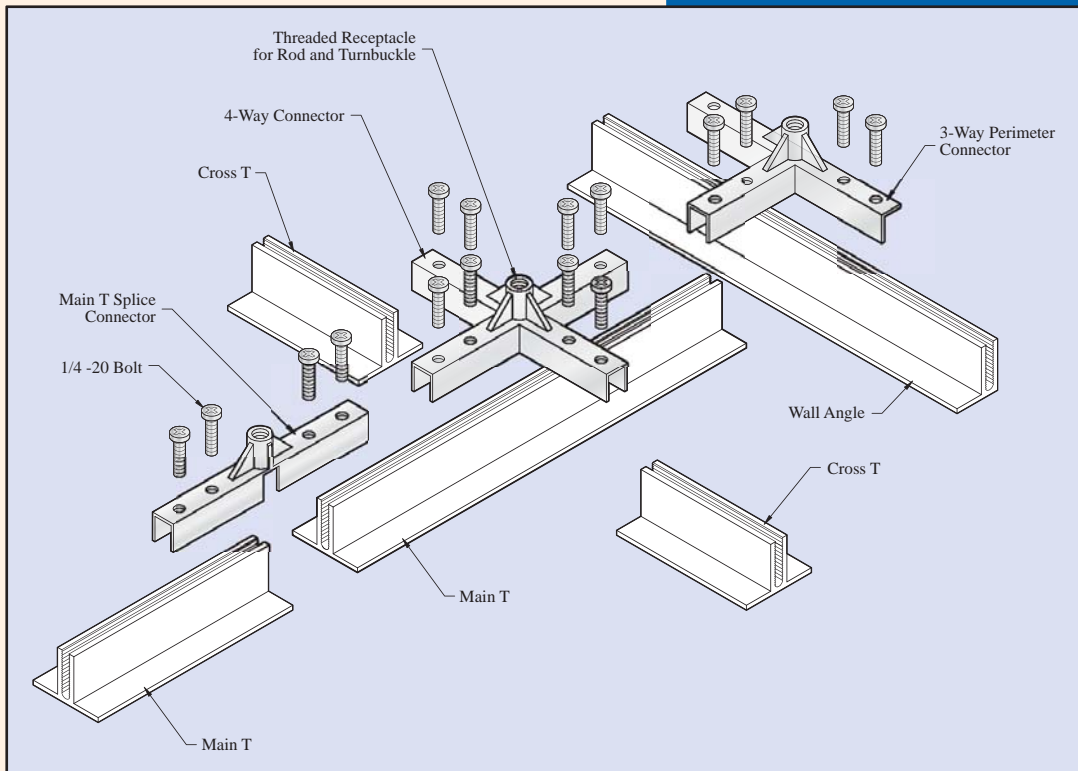


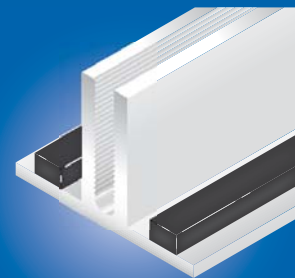
## Gasket Style 2" Heavy Duty T-Grid

**Easy to Install Dead Level  
Superior Load Bearing Capability  
Designed to Meet Exacting Standards for Cleanrooms**



Our suspension hardware provides easy adjustment requiring one-half the turnbuckles that other systems use and the ceiling can be installed dead level. Another advantage over non-structural T-Bar is that our 2" HD T-Bar doesn't twist, resulting in less time to install.

Gasket Style T-Bar extruded from 6063 aluminum featuring a clear anodized satin finish, maximum corrosion resistance, structural integrity and a state-of-the-art ceiling from inside.



### **2" Gasket Seal**

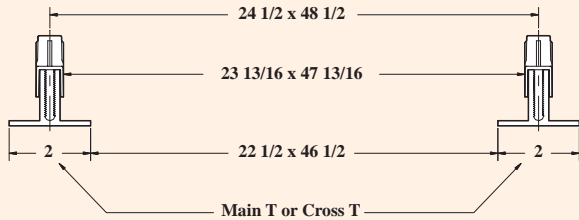
- Anodized Aluminum In Stock
- White Powder Coat Finish Available

## Gasket Style T-Grid Parts for 2" T-bar

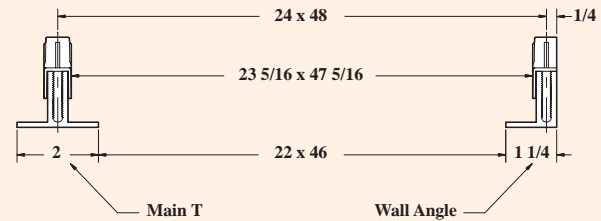
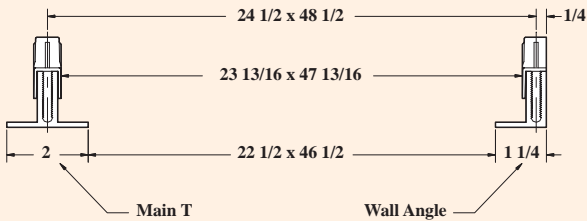
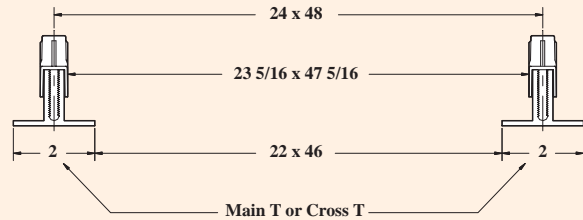
Part No.	Description	Nominal	Actual	Web Depth	Flange Width	Weight Per LF	Pieces Per Carton	Linear Feet Per Carton
148015	Main T	12'	144"	1 3/8"	2"	0.85 lb.	12	144
148011 148012	Cross T	4'	46" 46.5"	1 3/8"	2"	0.85 lb.	36	144
148009 148010	Cross T	2'	22" 22.5"	1 3/8"	2"	0.85 lb.	36	72
148016	Wall Angle	12'	144"	1 3/8"	1 1/4"	0.65 lb.	12	144

## Gasket Style T-Bar Opening Sizes

**Standard 24 1/2" x 48 1/2" o.c.**



**Undersize 24" x 48" o.c.**



## Load Specifications for Gasket Style T-Grid System

Deflection Formula	L/360	L/180	L/360
Hanger Spacing (Span)	48"	48"	24"
Main Tee Spacing	48"	48"	48"
Maximum Point Load (LBS.)	116	168	336
Maximum Uniform Load (LBS./LF)	26.5	42	168
Applied Load (LBS./SF)	6.6	10.5	42
Deflection at mid-span	1/8"	1/4"	1/16"